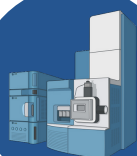


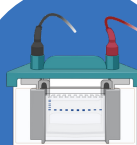
NBE CHARACTERIZATION

Gem ForLab services are aimed to characterize **novel biological compounds** that have not previously been approved for use in humans.

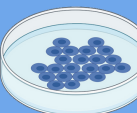
For this purpose, **we use different approaches to reach the best result.**



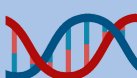
LC/MS - LC/UV



1D/2D PAGE



IN VITRO ASSAYS



QUALITY CONTROL



+39 011 0891050



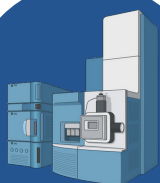
gemforlab.com



info@gemforlab.com

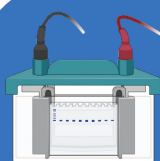


NBE CHARACTERIZATION



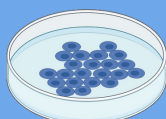
LC/MS - LC/UV

- Size Exclusion Chromatography (SEC)
- Cation Exchange Chromatography (CEX) on pH gradient
- Intact and reduced protein analyses
- Intact and reduced deglycosylated protein analyses
- Peptide Mass Fingerprinting (PMF)



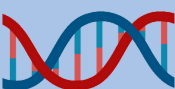
1D/2D PAGE

- SDS PAGE of reduced and non-reduced proteins
- 2D PAGE of reduced proteins
- Image analyses
- Western Blotting



IN VITRO ASSAYS

- Cell based assay (e.g. Cytotoxicity)
- Immunometric potency assay
- Genotoxicity Ames test



QUALITY CONTROL

- Host cell proteins
- Host cell DNA
- Lal Test

